

# Sanitech

## WASTE WATER TREATMENT PLANTS



**We specialise in Industrial Wastewater Treatment Plants,  
Biological Treatment Plants and Potable Water Plants**

Using standard modular equipment being selected from design parameters that are established by Jar Tests and Chemical Analysis of wastewater samples and including a chemical program, we can supply you with a cost-effective solution for treating your wastewater to comply with the relevant local government by-laws. In addition, we supply custom-made solutions and secondary treatment systems.



**TECHNOLOGY TO HELP YOU SAVE THE PLANET**

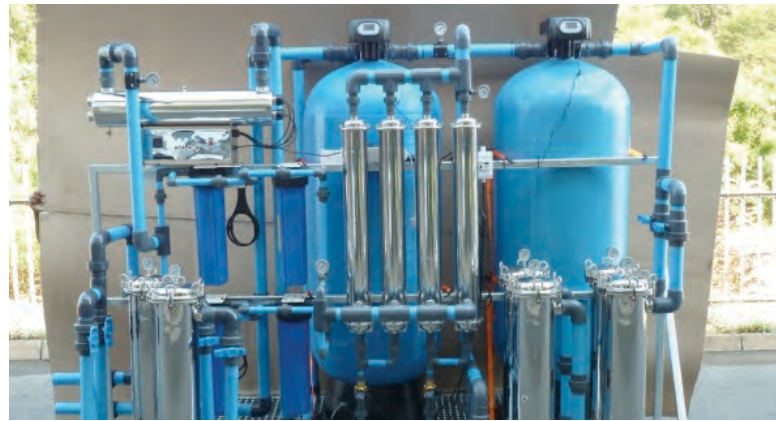
## INDUSTRIAL WASTE WATER TREATMENT



Each Sanitech Industrial Waste Water Treatment plant is designed according to the specific requirement of each application; thus, we are able to design any size plant accordingly.

We use the following equipment for our designs: Flotation systems, Flocculators (Plug Flow), Oil/Water separators, Settlers, Biological treatment and Screens.

## WATER TREATMENT PLANTS



Each Sanitech Potable Water Treatment plant is designed according to the specific requirement of each application; thus, we are able to design any size plant accordingly.

Depending on the raw water that needs to be treated the following technologies is used: Flocculation, Settling, Sand Filter, Carbon Filter, Disk Filters & Disinfection.

## POTABLE WATER TREATMENT



## BIOLOGICAL WASTE WATER TREATMENT



Each Sanitech Biological Waste Water Treatment Plant is designed according to the specific requirement of each installation; thus, we are able to design any size plant accordingly.

The plant design and operation is based on the use of submerged film media in the aerobic chamber to enhance the surface area for bacterial growth.

Please fill in the tables below in order for us to give you an accurate proposal:

Source Water (please select)		Analysis required	Type of Industry (please specify)
Sewage	<input type="checkbox"/>	No	
Industrial waste water	<input type="checkbox"/>	Yes	
Surface water	<input type="checkbox"/>	Yes	

Discharge requirement (Please select)		Specify Volume/Flow per day/h required
General Limits (DWS)	<input type="checkbox"/>	
Special Limits (DWS)	<input type="checkbox"/>	
Municipal sewer discharge limits	<input type="checkbox"/>	
Reuse (Specify quality)	<input type="checkbox"/>	
Potable Water	<input type="checkbox"/>	



**Gerhard Britz**  
Director of Environmental Systems

+27 (0)11 823 6060  
+27 (0)73 001 3705  
gerhardbr@sanitech.co.za

Visit [www.sanitech.co.za](http://www.sanitech.co.za) or 086 110 8642  
for a branch nearest you Branches Nationwide